



MY220滾珠絲桿傳動系列



最大行程 1500mm
Maximum Stroke

最高速度 2000mm/s
Maximum Speed

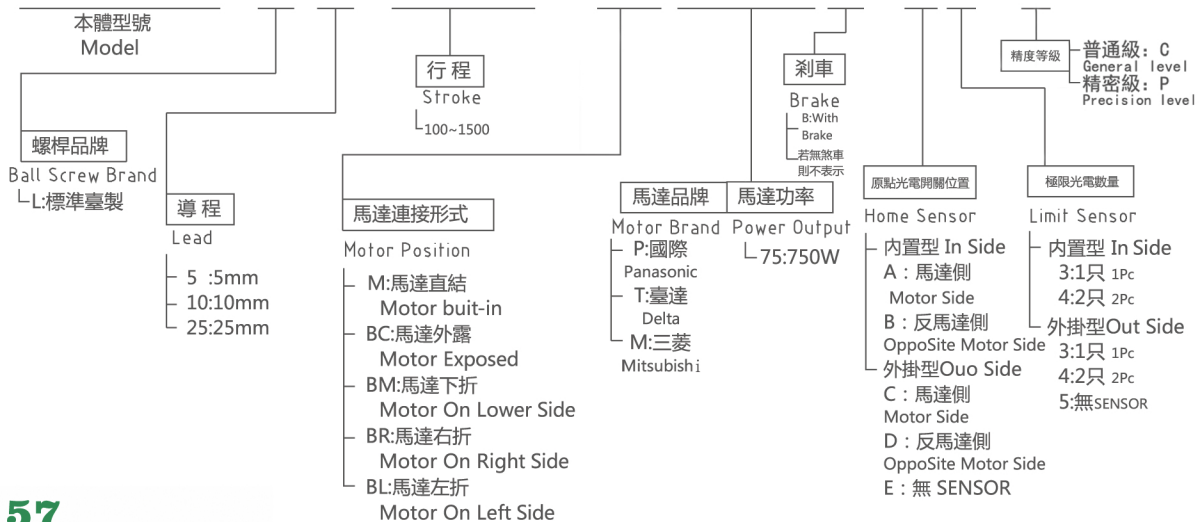
馬達容量 750W
Motor Output

滾珠螺桿 $\phi 25\text{mm}$
Ball Screw

直線滑軌 23x18-2支
Linear Guide

型號表示方式 Ordering Method

MY220-T25-800L-BC-P20B-C4-C



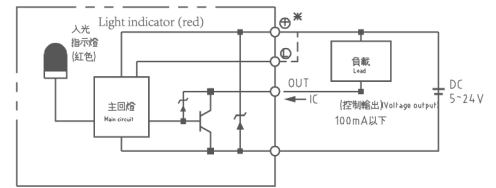


基本仕様 Specification

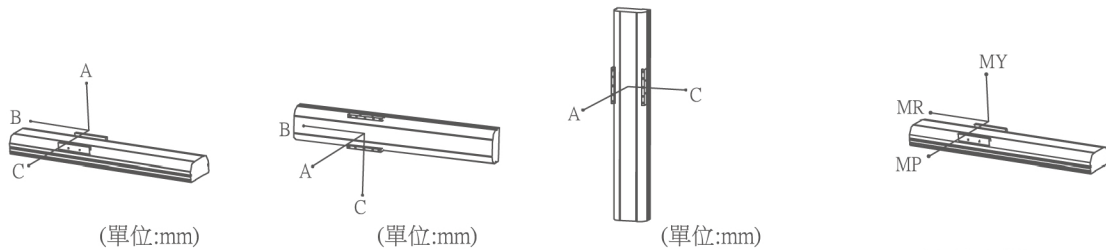
性能	位置重複精度 Repeatability (mm)	±0.01/±0.02			
	螺桿導程 Belt Lead (mm)	5	10	25	
	最高速度 Maximum Speed (mm/s)	250	500	1250	
	最大可搬重量 Maximum Payload	水平使用Horizontal(kg)	150	150	120
		垂直使用Vertical (kg)	55	45	20
	定格推力 Rated Thrust (N)	2565	1281	640	
	標準行程 Stroke Pitch (mm)	100-1500mm/50pitch			
部品	AC伺服馬達容量 AC Servo Motor Output(W)	750			
	滾珠螺桿外徑 Ball Screw ϕ (mm)	C5/C7 $\phi 25/\phi 32$			
	高剛性直線滑軌 High Rigidity Linear Guide(mm)	23x18			
	聯軸器 Coupling (mm)	19x17			
	原點感應器 Home Sensor	外掛 Outside	EE-SX672(NPN)		

*行程超過1250時,會產生螺桿偏擺,此時請將速度調降

感應器接線圖 < 原點及端點 > Sensor Layout



基本仕様容許負載力距表 N.m Allowable Overhang



水平安裝 Horizontal Installation				牆面安裝 Wall Installation				垂直安裝 Vertical Installation					
	A	B	C		A	B	C		A	C			
Lead 5	60kg	3672	653	866	Lead 5	60kg	795	525	3657	Lead 5	30kg	2688	2688
	100kg	3000	370	497		100kg	416	248	2993		50kg	1893	1893
	150kg	2493	273	363		150kg	290	159	2479		70kg	1640	1640
Lead 10	60kg	2652	899	994	Lead 10	60kg	982	815	2573	Lead 10	20kg	2297	2297
	100kg	1775	526	593		100kg	569	442	1680		30kg	1518	1518
	150kg	1396	317	267		150kg	337	232	1258		45kg	999	999
Lead 25	50kg	2862	956	1191	Lead 25	50kg	1207	879	2862	Lead 25	15kg	2767	1767
	80kg	2412	581	773		80kg	779	504	2412		20kg	2100	2100
	120kg	2025	373	556		120kg	515	295	2025		25kg	1702	1702
Lead 40	10kg	4010	4010	3460	Lead 40	10kg	3057	4113	4113	Lead 40	-	-	-

水平使用時
Static Loading Moment (單位:N.m)

MY	2052 (N)
MP	2052 (N)
MR	1810 (N)

搭配伺服馬達一覽表 Suitable Motor Brand

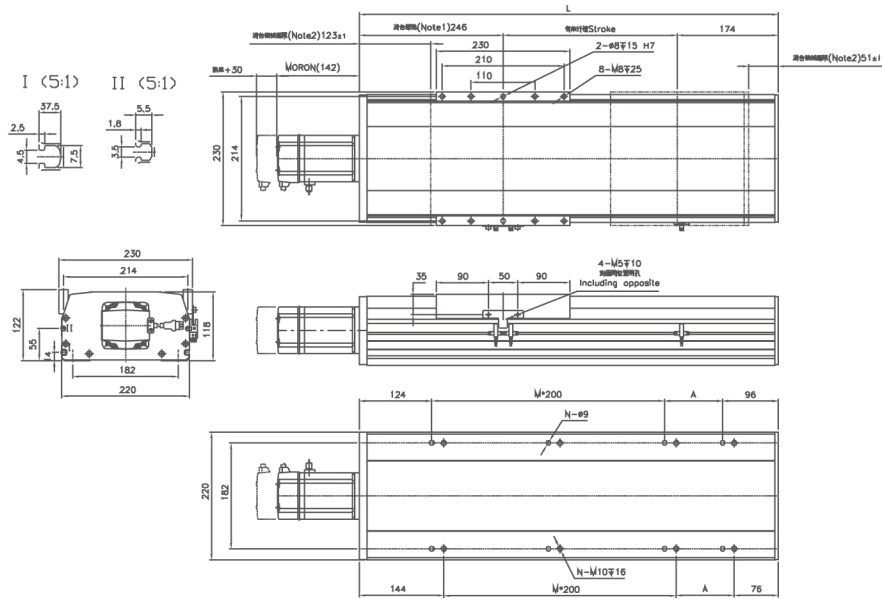
廠牌 Brand	馬達記號 Mark	煞車有無 Brake	馬達容量 W atp W	電源電壓 AC-Voltage AC-V	伺服馬達型號 Motor Model	驅動器型號 Driver Model
三菱 Mitsubishi	M	No brake (Horizontal Type)	750	220	HF-KP73	MR-J3-70A
		With brake (Vertical Type)	750	220	HF-KP73B	MR-J3-70A
國際 Panasonic	P	No brake (Horizontal Type)	750	220	MHMD082P1S	MCDDT3520
		With brake (Vertical Type)	750	220	MHMD082P1T	MCDDT3520
台達 Delta	T	No brake (Horizontal Type)	750	220	ECMA-C20807ES	ASD-B20721-B
		With brake (Vertical Type)	750	220	ECMA-C20807FS	ASD-B20721-B





BC: 馬達外露

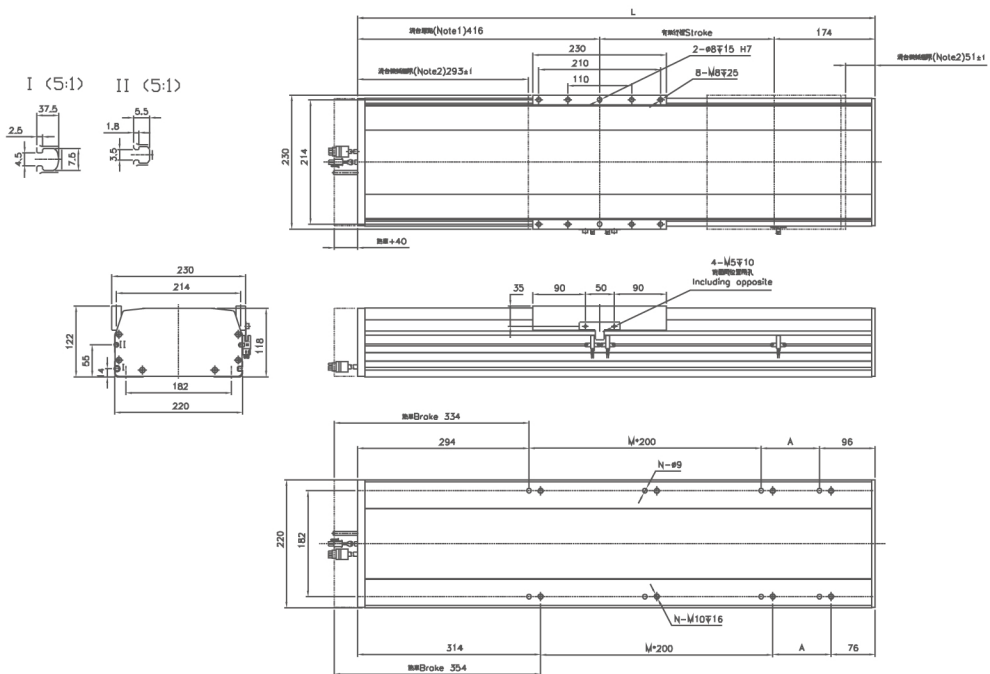
Note1: Position of the table slider when returned to the origin
 Note2: Distance from both ends to the mechanical stopper



Stroke	100	150	200	250	300	350	400	450	500	550	600	650	700	750	800	850	900	950	1000	1050	1100	1150	1200	1250
L	520	570	620	670	720	770	820	870	920	970	1020	1070	1120	1170	1220	1270	1320	1370	1420	1470	1520	1570	1620	1670
A	100	150	200	50	100	150	200	50	100	150	200	50	100	150	200	50	100	150	200	50	100	150	200	50
M	1	1	1	2	2	2	2	3	3	3	3	4	4	4	4	5	5	5	5	6	6	6	6	7
N	6	6	6	8	8	8	8	8	10	10	10	10	12	12	12	12	14	14	14	14	16	16	16	18
KG	24.1	25.3	26.6	27.8	29	30.2	31.4	32.7	33.9	35.1	36.3	37.5	38.8	40	41.2	42.4	43.6	44.9	46.1	47.3	48.5	49.7	51	52.2

M: 馬達直結

Note1: Position of the table slider when returned to the origin
 Note2: Distance from both ends to the mechanical stopper



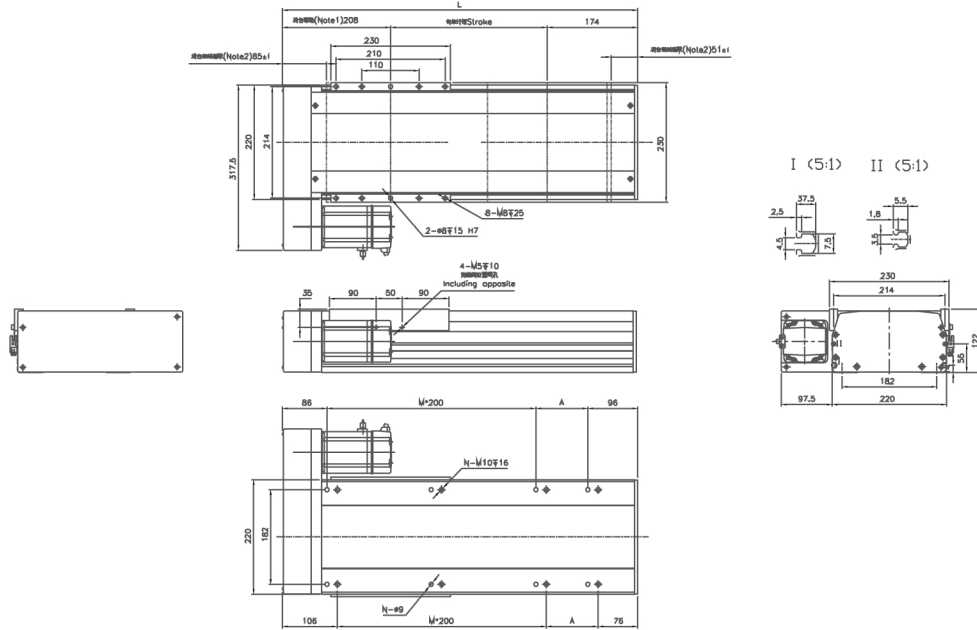
Stroke	100	150	200	250	300	350	400	450	500	550	600	650	700	750	800	850	900	950	1000	1050	1100	1150	1200	1250
L	690	740	790	840	890	940	990	1040	1090	1140	1190	1240	1290	1340	1390	1440	1490	1540	1590	1640	1690	1740	1790	1840
A	100	150	200	50	100	150	200	50	100	150	200	50	100	150	200	50	100	150	200	50	100	150	200	50
M	1	1	1	2	2	2	2	3	3	3	3	4	4	4	4	5	5	5	5	6	6	6	6	7
N	6	6	6	8	8	8	8	10	10	10	10	12	12	12	12	14	14	14	14	16	16	16	16	18
KG	24.1	25.3	26.6	27.8	29	30.2	31.4	32.7	33.9	35.1	36.3	37.5	38.8	40	41.2	42.4	43.6	44.9	46.1	47.3	48.5	49.7	51	52.2





BL: 馬達左折

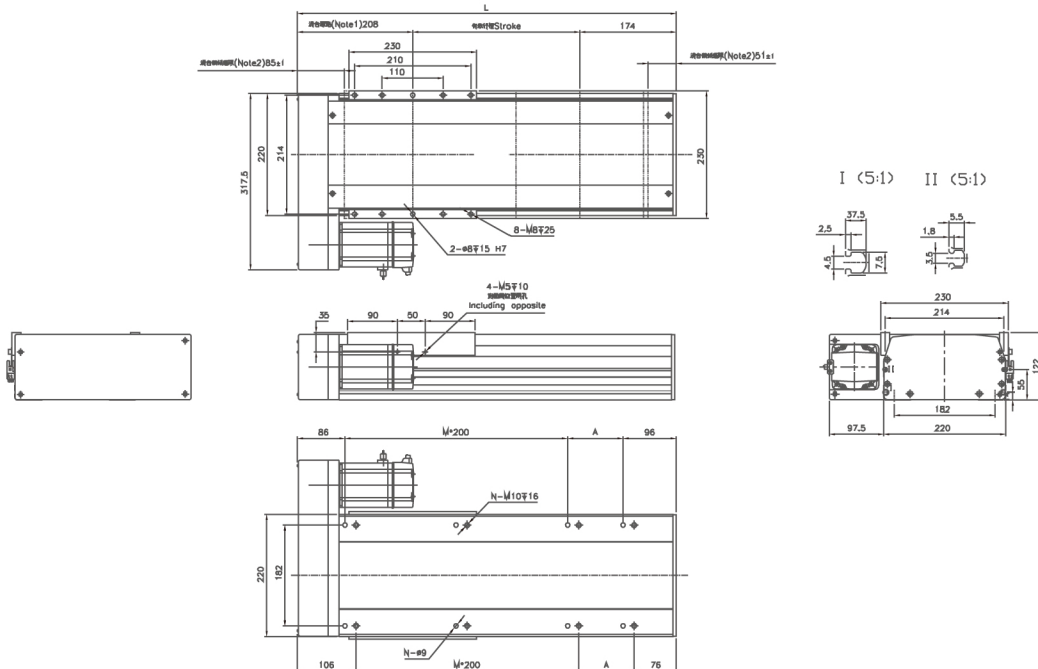
Note1: Position of the table slider when returned to the origin
 Note2: Distance from both ends to the mechanical stopper



Stroke	100	150	200	250	300	350	400	450	500	550	600	650	700	750	800	850	900	950	1000	1050	1100	1150	1200	1250
L	482	532	582	632	682	732	782	832	882	932	982	1032	1082	1132	1182	1232	1282	1332	1382	1432	1482	1532	1582	1632
A	100	150	200	50	100	150	200	50	100	150	200	50	100	150	200	50	100	150	200	50	100	150	200	50
M	1	1	1	2	2	2	2	3	3	3	3	4	4	4	4	5	5	5	5	6	6	6	6	7
N	6	6	6	8	8	8	8	10	10	10	10	12	12	12	12	14	14	14	14	16	16	16	16	18
KG	24.1	25.3	26.6	27.8	29	30.2	31.4	32.7	33.9	35.1	36.3	37.5	38.8	40	41.2	42.4	43.6	44.9	46.1	47.3	48.5	49.7	51	52.2

BR: 馬達右折

Note1: Position of the table slider when returned to the origin
 Note2: Distance from both ends to the mechanical stopper



Stroke	100	150	200	250	300	350	400	450	500	550	600	650	700	750	800	850	900	950	1000	1050	1100	1150	1200	1250
L	482	532	582	632	682	732	782	832	882	932	982	1032	1082	1132	1182	1232	1282	1332	1382	1432	1482	1532	1582	1632
A	100	150	200	50	100	150	200	50	100	150	200	50	100	150	200	50	100	150	200	50	100	150	200	50
M	1	1	1	2	2	2	2	3	3	3	3	4	4	4	4	5	5	5	5	6	6	6	6	7
N	6	6	6	8	8	8	8	10	10	10	10	12	12	12	12	14	14	14	14	16	16	16	16	18
KG	24.1	25.3	26.6	27.8	29	30.2	31.4	32.7	33.9	35.1	36.3	37.5	38.8	40	41.2	42.4	43.6	44.9	46.1	47.3	48.5	49.7	51	52.2

